



AIR TREATMENT SOLUTIONS



Cassette
42GW

The benchmark on the market, innovation included



Cassette 42GW



Aesthetics - comfort - performance

- More than **600,000 units** sold
- **10 years of success**
- **All components** made by Carrier
- Noise level **3 dB(A)** lower^(*)
- **50 to 70%** lower consumption ^(**)

* Compare to old unit

** Compare to multi-speed AC motors



Carrier SERVICE

Three easy steps to order spare parts

Our website www.carrier.com gives you direct access to spare parts. It provides references, item availability and uses a simple three-step order process:

- browse for the item,
- check availability
- download the order form!

Cassette Idrofan: a 10-year success story



Keys to the success

Over the last 10 years approximately 600,000 Idrofan units have been sold in Europe. Clean design lines, ease-of-installation and reliability are the keys to the success of this range. The cassette now offers new innovative solutions as well as optimal comfort to end-users and installers, and low energy consumption LEC motors.

Choose Carrier quality

Only Carrier can offer you a tailor-made product with 100% Carrier components and meeting European standards. Carrier cassettes are continuously improved - the new fans have been developed by UTC Carrier experts. The name Carrier is synonymous with quality and service.

Make it simple with Carrier service

Wherever you are, there is always a competent team nearby to help. How? Simply connect to www.carrier.com to find spare parts and all the information you need.



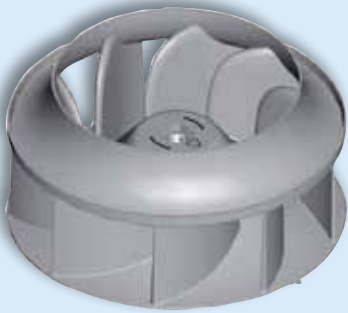
Carrier GREEN



The environment and personal comfort are longstanding priorities for Carrier. All innovations are focused on finding environmentally sustainable solutions while improving personal comfort. This range offers:

- Increased energy savings, meeting requirements for low-consumption buildings
- A response to the 2020 target of 20% fewer CO₂ emissions in the atmosphere
- Innovations to help you reduce your electricity bill by 50 to 70%!

The benchmark on the market, **innovations included**



Quiet efficiency

The optional LEC motors not only guarantee significant energy savings, they also considerably reduce the operating noise of the cassette.



New enhanced performance

- Variable-speed LEC motors with continuous power adjustment provide the right air flow for the space and contribute to a 50 to 70% reduction in energy consumption.
- Automatic air flow control from 0 to 100% in both cooling and heating mode guarantees individual comfort.
- The new more ergonomic Carrier fan design ensures minimised noise levels.
- The new four-pipe coil design improves heating performance and reduces costs for optimised system energy efficiency.

High reliability & serviceability

- Optimised air flow: the control box has been moved to free space in the cassette and reduce noise levels, with easy access to all electrical connections from the cassette side.
- The independent condensate pump ensures enhanced reliability and fewer constraints. A float detects water and starts the pump automatically, if necessary.
- The new monobloc coil drain pan absorbs noise and facilitates water drainage and access to main components.

The Idrofan 42GW offers a wide range of options for enhanced performance and solutions that precisely match your needs.



Flexible hydronic options: a customised comfort solution

- Suitable for any configuration and diverse requirements with a wide range of options: two-way or four-way valves (three-way valve with integrated bypass), 230-V or 24-V, on/off or modulating valve actuators
- The moulded plastic frame, and the anti-condensate valve body shell increase safety and simplicity
- Auxiliary water valve drain pan

A wide range of controllers



■ THERMOSTAT A/B

An elegant electronic thermostat with automatic or manual speed controls, automatic or manual summer/winter modes, frost protection function and economy mode.



■ HDB CONTROLLER

Allows unit grouping in a closed operation loop with infrared or wired remote control, and daily time scheduling.



■ NTC CONTROLLER

Allows unit control with the LEC option. By optimising the new Carrier algorithms, the communicating controller combines energy savings with optimised comfort.



■ AQUASMART SYSTEM

Touch-screen control of all system components by unit, zone or building occupancy. Centralised control or 24-hour control via the Internet, if available. Optimised energy savings at your fingertips.

Technical data

42GW (AC/LEC motors)			200/209			300/309			400/409			500/509			600/609			700/709		
Fan speed (AC motor Nb)	Nb		1	2	3	1	2	3	1	2	3	1	2	3	1	2	3	1	2	3
Fan speed (AC motor Nb)																				
Fan speed (LEC motor V)	V		10	6	2	10	6	2	10	6	2	10	6	2	10	6	2	10	6	2
Air flow rate	2 pipe & 4 pipe	m³/h	660	450	360	735	505	320	900	625	485	980	720	530	1160	825	500	1600	1080	600
		l/s	183	125	100	204	140	89	250	174	135	272	200	147	322	229	139	444	300	167
Total cooling capacity	2 pipe	kW	2.40	1.80	1.55	4.00	2.90	1.90	4.70	3.50	2.85	6.30	4.50	3.40	7.20	5.50	3.70	9.60	6.60	4.05
Sensible cooling capacity		kW	2.01	1.49	1.31	3.10	2.20	1.41	3.70	2.70	2.10	4.80	3.60	2.70	5.50	4.10	2.70	7.35	4.85	3.00
Water flow rate (cooling and heating)	2 pipe	l/h	413	310	267	688	499	327	808	602	490	1084	774	585	1238	946	636	1651	1135	697
		l/s	0,115	0,086	0,074	0,191	0,139	0,091	0,225	0,167	0,136	0,301	0,215	0,162	0,344	0,263	0,177	0,459	0,315	0,194
Eurovent Energy Class FCEER, AC motor			D			C			D			C			C			D		
Eurovent Energy Class FCEER, LEC motor			A			A			B			A			A			A		
Heating capacity	2 pipe	kW	3.20	2.50	2.20	5.00	4.00	2.50	6.20	4.60	3.70	8.11	6.00	4.50	10.00	7.40	4.60	13.00	9.30	5.20
Eurovent Energy Class FCEER, AC motor				D			C			D			C			C			D	
Eurovent Energy Class FCEER, LEC motor			A			A			B			A			A			A		
Electric heating capacity	2 pipe	W	1500			2500			2500			3000			3000			3000		
Total cooling capacity	4 pipe	kW	2.20	1.65	1.45	3.50	2.70	2.00	4.10	3.25	2.60	NA			NA			9.10	6.80	3.80
Sensible cooling capacity		kW	2.00	1.48	1.27	2.70	2.10	1.50	3.30	2.60	2.05	NA			NA			7.10	5.20	2.70
Water flow rate (cooling)	4 pipe	l/h	378	284	249	602	464	344	705	559	447	NA			NA			1565	1170	654
		l/s	0,105	0,079	0,069	0,167	0,129	0,096	0,196	0,155	0,124	NA			NA			0,435	0,325	0,182
AC motor Eurovent energy class FCEER			E			C			D			NA			NA			D		
LEC motor Eurovent energy class FCEER			B			A			B			NA			NA			A		
Heating capacity	4 pipe	kW	1.90	1.44	1.24	6.37	5.10	3.60	6.80	5.80	5.00	NA			NA			16.00	11.50	7.30
Water flow rate (heating)		l/h	163	124	107	548	439	310	585	499	430	NA			NA			1376	989	628
		l/s	0,045	0,034	0,030	0,152	0,122	0,086	0,162	0,139	0,119	NA			NA			0,382	0,275	0,174
Eurovent Energy Class FCEER, AC motor			E			B			C			NA			NA			C		
Eurovent Energy Class FCEER, LEC motor			B			A			A			NA			NA			A		
Sound power level	2 pipe & 4 pipe	dB(A)	47	37	32	52	44	32	57	48	42	47	40	34	53	46	37	61	52	40
Sound pressure level (*)		dB(A)	47	37	32	52	44	32	57	48	42	47	40	34	53	46	37	61	52	40
NR value (*)			42	32	27	47	39	27	52	43	37	42	35	29	48	41	32	56	47	35
Unit Dimensions (Height x Length x Width**)		mm	298 x 569 x 627			298 x 569 x 627			298 x 569 x 627			302 x 822 x 879			302 x 822 x 879			302 x 822 x 879		
Net unit weight	2 pipe & 4 pipe	kg	15.0			16.5			16.5			37.0			39.6			39.6		
Grille Dimensions (Height x Length x Width**)		mm	30 x 720 x 720			30 x 720 x 720			30 x 720 x 720			37 x 960 x 960			37 x 960 x 960			37 x 960 x 960		
Grille Weight		kg	2.5			2.5			2.5			5.0			5.0			5.0		

Based on Eurovent conditions:

Cooling mode (2 and 4-pipe coil): entering air temperature 27°C db/1 9°C wb, entering/leaving water temperature 7/12°C, high fan speed.

Heating mode (2-pipe coil): entering air temperature 20°C, entering water temperature 50°C, high fan speed, water flow rate as cooling mode.

Heating mode (4-pipe coil): entering air temperature 20°C, entering water temperature 70°C, high fan speed, water temperature difference 10 K

(*) Sound pressure level and NR values based on a hypothetical sound attenuation for the room of -9 dB(A)

The electrical heater version is available on all 2 pipe units.

(**) including electrical box dimension

NA: Not Available



turn to the experts™



United Technologies

Climate | Controls | Security