

more than an
air conditioner



choose your style

AMBI Series

Air Master for Better Innovation



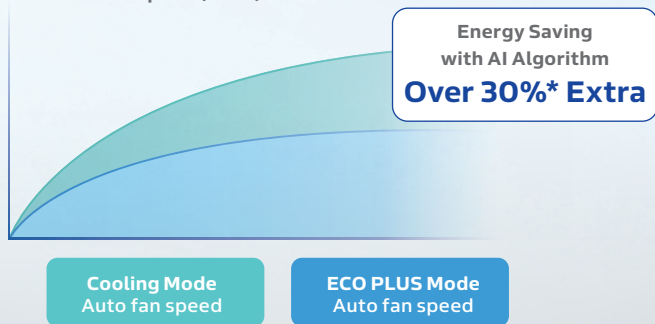
A MASTERMIND OF ENERGY SAVING ENSURING YOUR COMFORT

The new ECO PLUS technology of inverter compressor saves energy while ensuring comfort. By AI algorithm, AMBI has more precise signal receiving, accurate data processing and sending timely instruction to compressor operation, in order to reduce energy loss. As "the mastermind", AMBI has 5 optional modes that minimize energy consumption and save money while effectively maintaining strong performance.



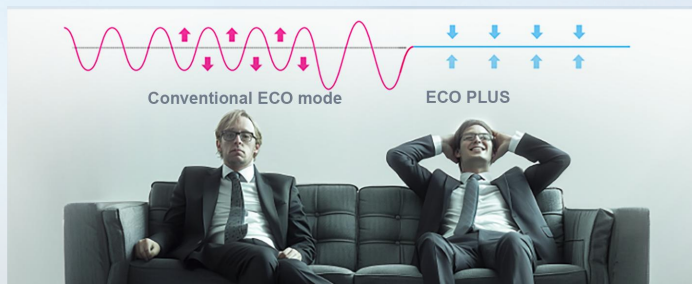
Energy saving

Power consumption(kW.h)



*The data is compared between the 35AMBI model ECO+ mode and conventional inverter model with the same cooling capacity on normal cooling mode by Midea Lab. Under the initial indoor temp. 32°C, outdoor temp. 35°C, set temp. 26°C, auto fan speed, RH 65%.

Comfort



Within ±0.3°C

Stable temperature to ensure comfort. The AI deep learning would automatically control the air conditioner to infinitely reach the preset temperature according to user habits.



Reliable PCB with UV Conformal Coating

Curing using UV light, the enhanced PCB coating is up to 100µm, providing 2X thicker and higher density protection. This helps further improving reliability in harsh environments with salt spray corrosion.

Corrosion Area
<0.02%*

Rating Number
9.8**

Verified by **intertek**
Total Quality Assured.

Dual Coating

* Depended on the using industrial environment with salt contamination (Ref.ISO 21207: 2015, Annex Atest method B, JIS Z 2371:2015 Annex JC)

** The full rating number is 10

Wider-voltage Operation

The superior electronic control system can operate continuously and smoothly within the range of 120V-264V regardless of the peak power consumption in the city or the power shortage in remote areas.



Unique Sand & Insect-resistant Upside-down PCB Design

AMBI adopts an inverted electronic system design which is more resistant to sand wind and insects, thus better avoid malfunction.



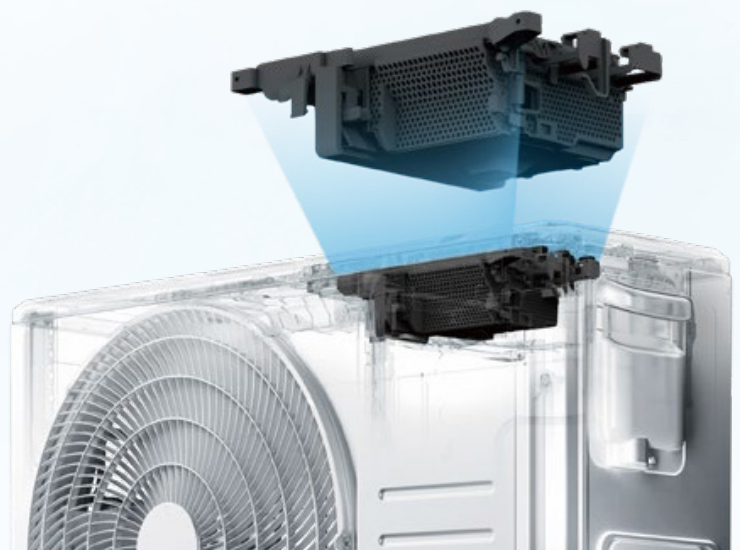
Better Heat Dissipation

Total surface area of the heat sink has increased, helping speed up the heat dissipation efficiency.

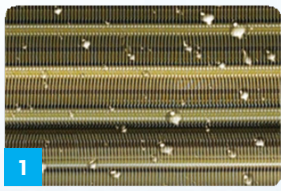


Reverse Dust Removal

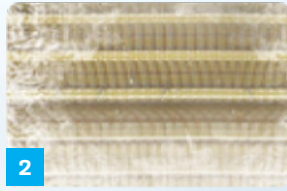
The outdoor unit's fan can rotate in reverse to clear dust from its heat exchanger, ensuring efficient heat exchange and less frequent cleaning.



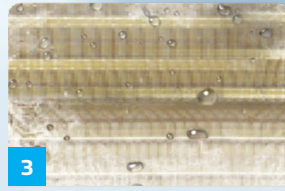
ACTIVE CLEAN TECHNOLOGY



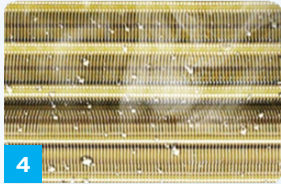
1 Water start to condensate, get ready for deep wash



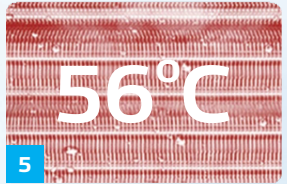
2 Condensated water gets frosting, removing dirt adhered to the evaporator



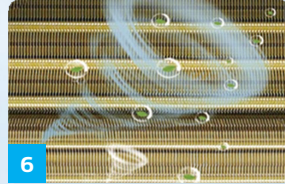
3 Defrost to form a large amount of water flow and peel off dirt



4 High temperature cleaning via steam, removing moisture and dust



5 High temperature purification at up to 56°C



6 Fresh air supply

Deep active cleaning process for the IDU evaporator and ODU condenser, followed by high temperature steam sterilization at 56°C for over 30 minutes (For EU and Oceania market). This ensures the whole AC system remains free of bacteria and dust, providing fresh and clean air.

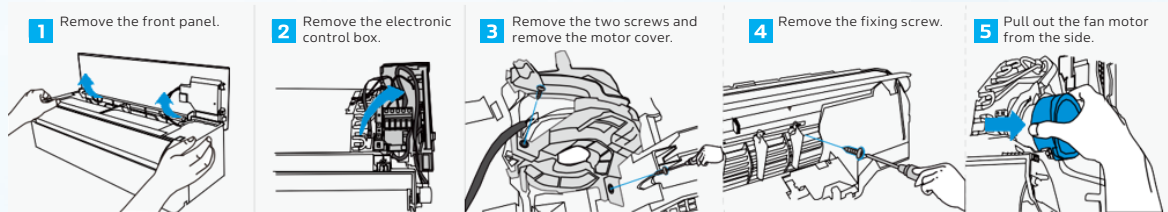
*The total cleaning time will vary according to the actual operating environment, and the longest time is 62 minutes for cooling and heating model.

Flexible installation & easy maintenance

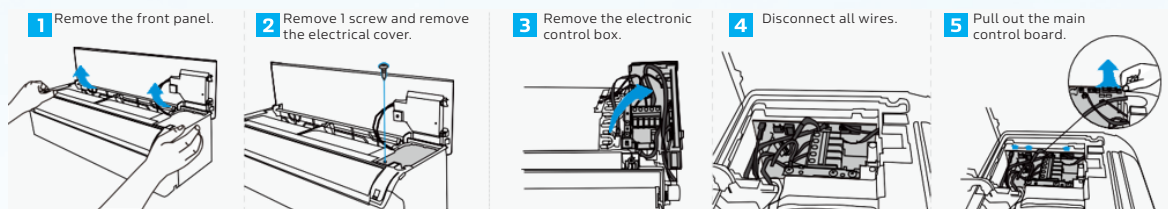
30mm to ceiling, a small step of AMBI, but a great step of AC



Easy to Maintain Fan Motor



Easy to Maintain PCB



MULTI-CONTROLLERS

AS YOUR MASTER KEY TO KEEP IN TOUCH WITH AMBI

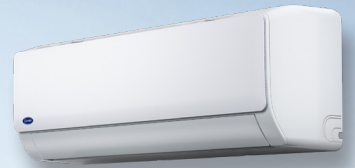
Multi-controllers

You can get in touch with AMBI on 6 different controllers.



Bluetooth® controller

A detachable, wall-mounted Bluetooth® remote controller



No built-in wiring required

Adaptable to all housing situations of customers from different regions

2.9-inch LCD display

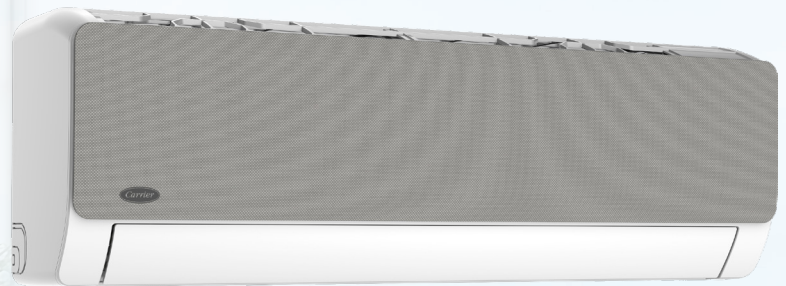
Broad and bright, with white backlight display

Monitor power usage

Users can monitor electricity consumption on Carrier App, in real-time, daily, weekly or monthly.



DESIGN EXPERT



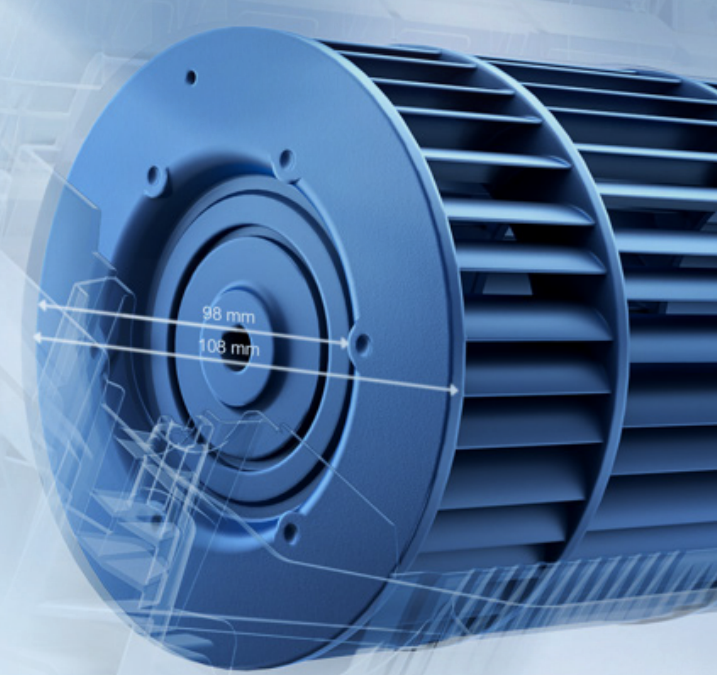
Elegant, minimalist and stylish panel design perfectly fits your interior decoration.



A MASTER OF COMFORT

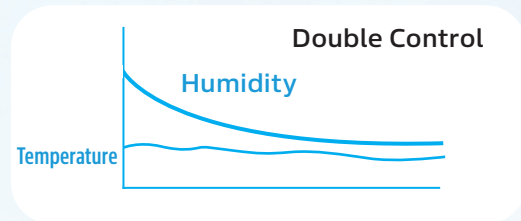
A master controller of noise providing a quieter environment

AMBI assures quietness down to 18dB(1), with larger cross-flow fan and new fan motor design.



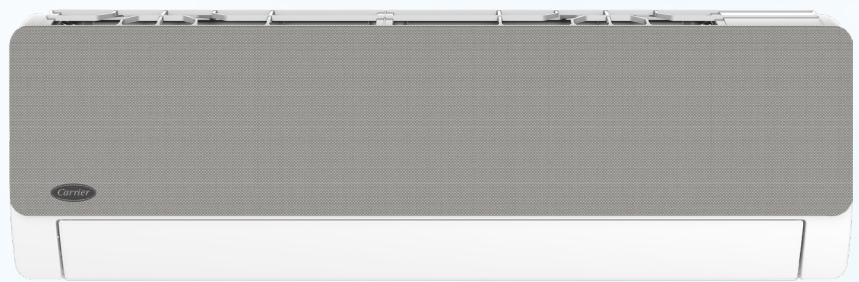
Intelligent Sensor for Optimal Humidity Control

To enjoy ideal humidity level without sacrificing a comfortable room temperature.



Temperature drop **Less fluctuation**

Humidity Control **35%-85%**



Conventional humidity control

Conventional units extract the moisture in air through continuously reducing the room temperature which often leads to dramatic temperature drop down to 10°C during dehumidification.

Carrier humidity control

When activating the humidity mode, the system can achieve the desired humidity level while keeping the room temperature stable, thanks to the humidity sensor.

How does Carrier humidity control work?



Step 1
Detect the humidity level of the room



Step 2
Adjust the fan speed to meet the setting humidity level



Step 3
Enhance or weaken humidity control according to the actual needs



Step 4
Achieve the setting temperature while keep the temperature stable

Technical Specifications

Indoor			42QCE009D8SP 42QCE009D8SP-G	42QCE012D8SP 42QCE012D8SP-G	42QCE018D8SP 42QCE018D8SP-G	42QCE024D8SP 42QCE024D8SP-G
Outdoor			38QCE009D8SP	38QCE012D8SP	38QCE018D8SP	38QCE024D8SP
Power supply		V-Ph-Hz	220_240V_Ph,Frequency 50HZ			
Cooling (Standard conditions)	Capacity	Btu/h	8871 (3753-10918)	11942 (3753-12965)	17742 (6141-20130)	23884 (6824-26613)
		kW	2.6 (1.1-3.2)	3.5 (1.1-3.8)	5.2 (1.8-5.9)	7.0 (2.0-7.8)
	Input	W	810 (80-1260)	1350 (80-1500)	1680 (140-2100)	2600 (420-3900)
	Current	A	3.8 (0.8-5.6)	6.3 (0.8-6.7)	7.1 (0.6-9.3)	11.5 (1.8-19.0)
	EER	W/W	3,2	2,59	3,1	2,69
Heating (Standard conditions)	Capacity	Btu/h	9997 (2831-12283)	12999 (3684-13818)	18424 (4435-20813)	25009 (5459-26613)
		kW	2.93 (0.83-3.60)	3.81 (1.08-4.05)	5.40 (1.30-6.10)	7.33 (1.60-7.80)
	Input	W	790 (140-1160)	1190 (170-1350)	1390 (220-1700)	2150 (300-2500)
	Current	A	3.7 (1.2-5.2)	5.4 (1.4-6.0)	6.1 (0.9-7.6)	11.0 (1.3-11.1)
	COP	W/W	3,71	3,2	3,88	3,41
Seasonal Cooling	Pdesignc	kW	2,6	3,5	5,2	7
	SEER	W/W	7	6,5	7,4	6,5
	Energy Efficiency Class		A++			
Heating (Average)	Pdesignh	kW	2,3	2,8	4,1	4,8
	SCOP	W/W	4,1			
	Energy Efficiency Class		A+			
	Tbiv	°C	-7	-7	-7	-7
Heating (Warmer)	Pdesignh	kW	2,5	3	4,6	5,6
	SCOP	W/W	5,1	5,2	5,1	
	Energy Efficiency Class		A+++			
	Tbiv	°C	2			
Tol		°C	-20	-20	-20	-20
Rated Power Input		W	2200		2800	3900
Rated Current		A	10		13	19
Compressor	Type		Rotary			
	Refrigerant oil/oil charge	ml	POE VG74 280±10 ml		ESTER OIL VG74 420±10ml	POE VG74 500±15ml
Indoor fan motor	Speed (Hi/Mi/Lo)	r/min	1150/990/910	1020/890/820	1000/868/802	1050/910/840
Indoor airflow (Hi/Mi/Lo)		m³/h	510/380/300/140	590/420/340/190	800/600/470/340	1039/752/606/400
Indoor noise level (Hi/Mi/Lo/Si)		dB(A)	38.5/33/23.5/18	39/32/24/18	43/35.5/33.5/20	45/39.5/36/20
Indoor sound power level		dB(A)	54	56	58	59
Indoor unit	Dimension (W×D×H)	mm	723×199×286	825*199*286	975×218×308	1055×231×330
	Packing (W×D×H)	mm	780×270×365	895*290*365	1035×295×385	1130×405×310
	Net/Gross weight	kg	7.0/9.2	7.4/9.7	10.3/13.3	12.4/15.9
Outdoor fan motor	Speed	r/min	800/700/600	810/700/600	830/700/650	900/550
Outdoor airflow		m³/h	1750	1750	2100	3500
Outdoor sound pressure level		dB(A)	54.5	56	57,5	60
Outdoor sound power level		dB(A)	62	63	65	68
Outdoor unit	Dimension (W×D×H)	mm	720×270×495		805×330×554	890×342×673
	Packing (W×D×H)	mm	835×300×540	835×300×540	915×370×615	995×398×740
	Net/Gross weight	kg	20.4/22.3	20.4/22.3	29.8/32.3	38.3/41.5
Refrigerant	Type		R32			
	GWP		675			
	Charged quantity	kg	0,46	0,49	0,80	0,95
Design pressure		MPa	4.3 / 1.7			
Refrigerant piping	Liquid side/ Gas side	mm(inch)	6.35mm (1/4inch) / 9.52mm (3/8inch)		6.35mm (1/4inch) / 12.7mm (1/2inch)	
	Max. refrigerant pipe length	m	25		30	50
	Max. difference in level	m	10		20	25
Connection wiring			1.5x5			2.5x5
Thermostat type			Remote Control			
Operating Range	Outdoor (cooling/heating)	°C	-15 ~ 50 / -20 ~ 24			



	AMBI QCE-P	
Comfort	Humidity Control	●
	Turbo	●
	Silent Mode	●
	Horizontal Swing	●
	Vertical Swing	●
	1%~100% Fan Speed Setting	●
	Breeze Away	●
	Follow me	●
	LED (turn on/off the indoor display LED)	●
	Be+ ion cloud	●
	Active clean (i-Clean)	●
	ODU Reverse Fan Operation	●
	Energy saving	ECO+
Sleep mode		●
Timer		●
FP Function (8°C heating)		●

Standard ●
Optional ○

	AMBI QCE-P	
Convenience	Child Lock	●
	°C and °F Change	●
	Engineering Mode Available	●
	Flexible Installation (30mm to ceiling)	●
	Wireless Bluetooth Controller	○
	On-off Control (via adapter)	○
	Error Alarm port (via adapter)	○
	Wired controller (via adapter)	○
	Central controller (via adapter)	○
	Extend pipe in evaporator	○
	Mono & Multi compatible	●
	Smart / Reliability	Wider-voltage Operation (120-264V)
Gold Fin		●
Refrigerant Leakage Detect		●
Auto Defrosting		●
Anti-Corrosion spray For Evaporator		○
TUI Copper Tubes For Evaporator		○
Built-in WiFi (embedded on display board)		●
Power Consumption Monitor (in APP)		●
Scheduler (in APP)	●	

Note: Manufacturer reserves the right to change any product specifications without notice.

ALARKO



**ALARKO CARRIER
SANAYİ VE TİCARET A.Ş.**

GOSB - Gebze Organize Sanayi Bölgesi, Şahabettin Bilgisu Cad.

No:1604 Gebze 41480 KOCAELİ - TÜRKİYE

Phone: +90 262 648 60 00

Fax: +90262 648 60 08

www.alarko-carrier.com.tr

info@alarko-carrier.com.tr